



ECOPLAST

WPC Installation guide

✓ Decking

**Contact
Us**

 (450) 337-8200

 37 rue Racine, Farnham, QC

 www.ecoplast.com



TABLES DES MATIÈRES

Congratulations on your purchase of Ecoplast patio boards, made from wood and recycled plastic. You have opted for a sustainable, environmentally friendly material that is maintenance-free and entirely made in Quebec. This guide will accompany you step by step in the creation of your new living space, so that you can fully enjoy the beautiful season.

General information

3

Caution

4

Frame structure

5

Board installation

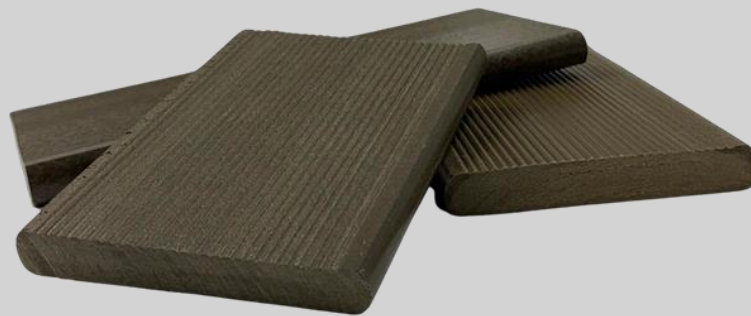
6 - 9

GENERAL INFORMATION

Product features

Our patio boards are made of approximately 65% wood and recycled HDPE plastic (high density polyethylene). Since they are specially made of wood, they will not lose their length, so you can easily create a design with your boards. You can install two boards end-to-end without any problem.

Our board offers all the advantages of wood without the Disadvantages. Its temperature is similar to wood radiating for a natural and warm experience. It also requires no maintenance.



BOARD STORAGE

Now that you have your Ecoplast boards in hand. We recommend that you place them on a flat surface and in a safe place so that they do not come to damage them.

CAUTION



IMPORTANT : Please follow the building codes in your area. If you do not follow the installation instructions, it is possible that our product warranty will be cancelled.



IMPORTANT : It is important not to install the Ecoplast boards on top of already installed boards. You must install them on joists.



IMPORTANT : You cannot use the planks to form the patio structure. However, it is always possible to make the structure in another format.



IMPORTANT : It is important to have safety shoes, safety goggles and long pants when building your patio.



IMPORTANT : It is necessary to know that the boards of Ecoplast are heavier than boards entirely made of wood. So be careful to lift the weight you are capable of.

STRUCTURE

We strongly recommend that you comply with the applicable construction standards for structure and slope drip required, depending on your patio length ([www. rbq. gouv. qc. ca](http://www.rbq.gouv.qc.ca)). Also make sure to respect the Planning rules for your municipality. We recommend that the structure be made with boards of 2 x 8 minimum.

STRUCTURE PREPARATION

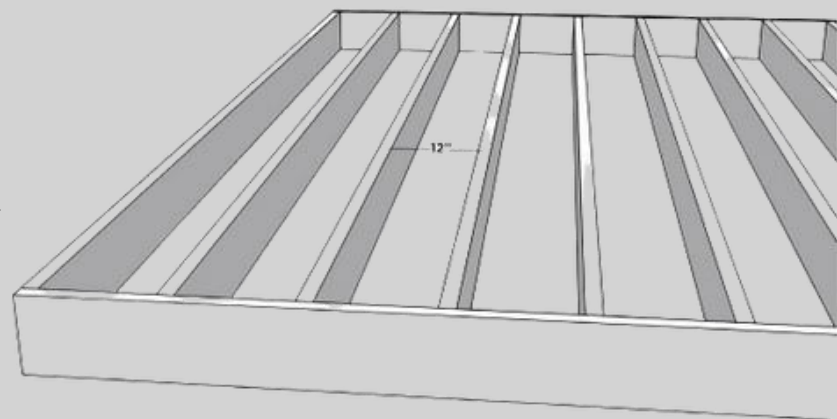
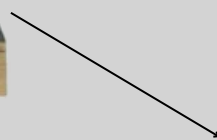
If you count used a wooden structure to made your patio structure,
It is better to put a
waterproof membrane on each of the joists for
extend their life. C' is a membrane of 4 ' ' wide.



Distance of the joists

- Joists at every 12 ' or 16 '' for patio boards of 20 feet and less.

-Joists every 10' for 20 feet and over patio boards



BOARD INSTALLATION

BOARD PREPARATION

Place the composite boards on the joists so you can see what the patio would look like when it is mounted.

Calculate the excess to evaluate the cuts to be made on the first and last patio planks (to avoid having a full board at one end of the patio and another close to it at the other end). You must also think about adding an overflow from 1' to 1.5" relative to the structure.

To ensure that your boards are installed straight, check with a laser level as you install so that the boards retain their position.

Never screw from the ends to the center. If you are alone to install, it is advisable to start from the right or the left side. If you are more than one person to install, start from the center towards the ends.

INSTRUCTIONS – STANDARD METHOD

1

Screw the 1st board from above or from below with your stainless steel screws. If it is from the top, pre-drill a 3 / 8 ' deep t rou with a 3 / 8 ' bit, to be able to put the screw cap on afterwards.

2

Une Once the first board is laid, using the laser level, start nailing the other boards one after the other. Check that your boards are in good straight and screw in each joist.

3

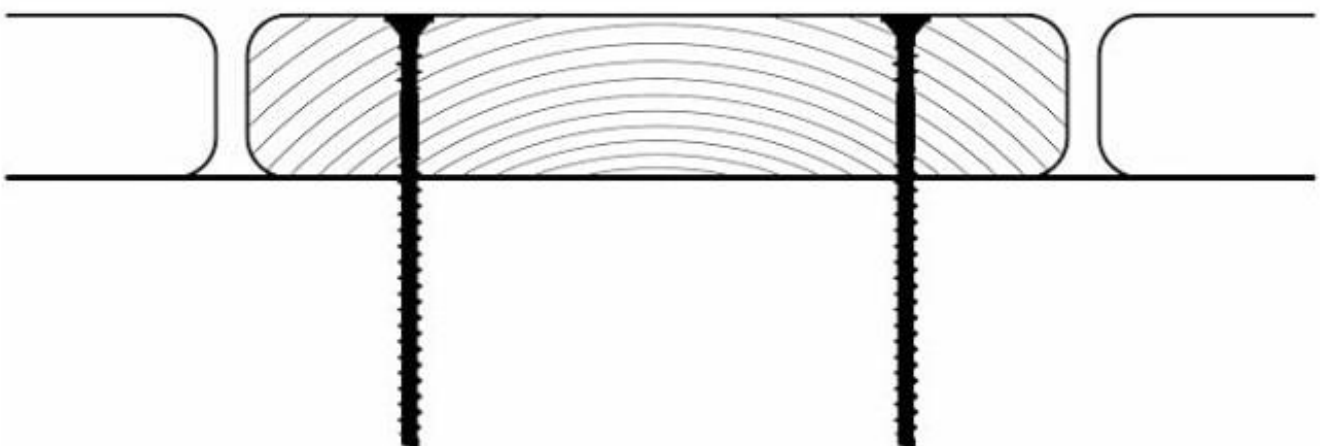
Repeat steps 1 and 2, do not forget to leave a ledge of 1 ' to 1 ' 5 ' relative to the structure.

4

If desired, you can pass a spin to d' rounding the edges of your patio. For a more straight finis, a simple stroke will be necessary to soften the saw.

5

Once all the boards are installed, place a line at the end of the patio using the chalk cord to make a sharp and straight cut. Do not forget to let the board from 1 ' ' to 1 " 5 " exceed the finition of the contour.



INSTRUCTIONS – 45 DEGREE METHOD

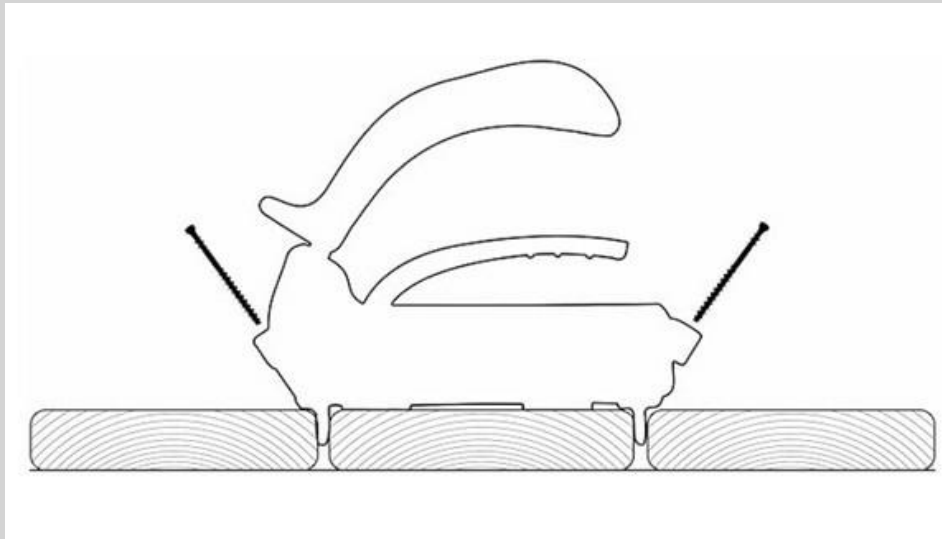
1

Start by placing your first board according to the design of your patio you have chosen.

2

To screw the first board, start at one end of the board, press the trigger handle and position the tool on the board

(don't forget the 1" indent for the board ends).



3

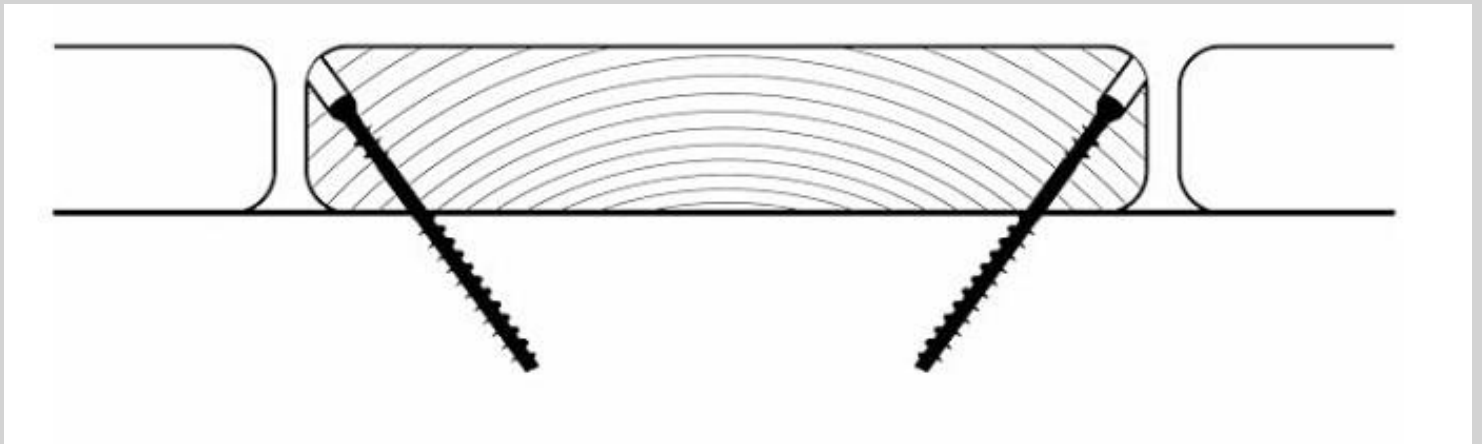
When the tool is in place, you can start to drive the screw into the outer edge of the blade by turning the drill at full speed. CAUTION: If you Force the screw, it may cause expansion or breakage.

4

To make the next board, use the tool on another board, push the bridge board against the board you just made. The spacer automatically creates an equal space between the boards.

5

Repeat the instructions 2 , 3 , 4 to repeat the process on the length of deck board on both edges.



ECOPLAST 